

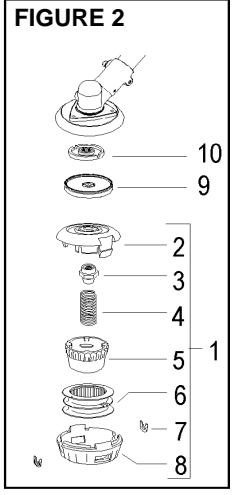
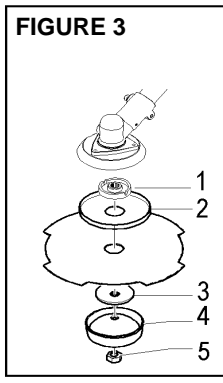
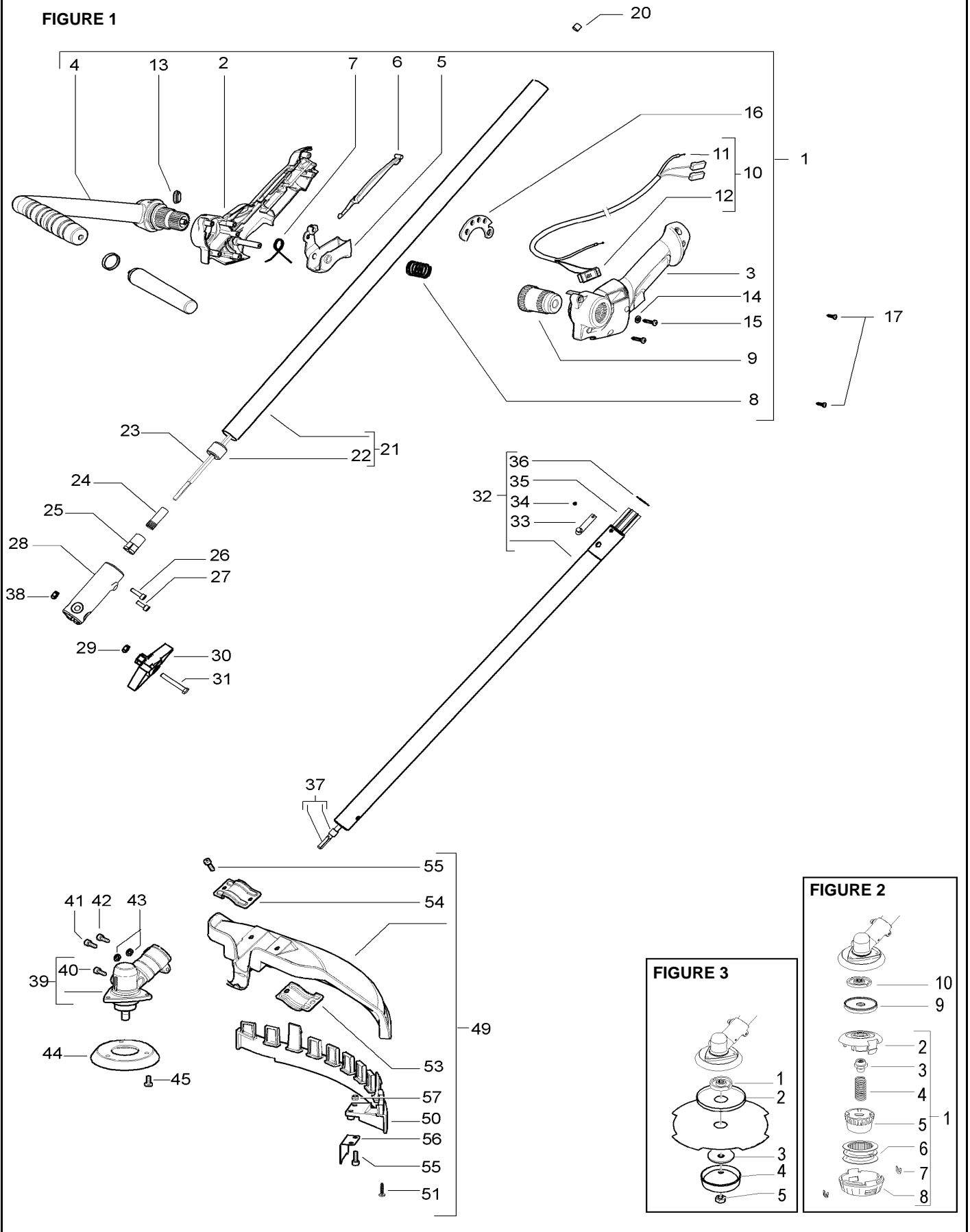
HUSQVARNA OUTDOOR PRODUCTS ITALIA

PNC	Type/ Prefix/ nd	Model	Brand
953900741	01	PREMIO EX	McCulloch
953900775	01	BA 300 EX	Partner

Number of Pages 1 of 5

Factory: IIQ - Valmadrera	Product Group: OP 93
Publication Number: MIPL2007_V180000001	Petrol Portable
Publication Date: 02/05/07	Sub Group 9433

FIGURE 1



Item	P/N McC	P/N ELX	Qty	DESCRIPTION
FIGURE 1				
1	242861	538242861	1	handle ass'y
2	• 242862	538242862	1	rear handle (right half)
3	• 242863	538242863	1	rear handle (left half)
C 4	• 242864	538242864	1	front handle
5	• 242865	538242865	1	throttle trigger
6	• 242866	538242866	1	safety lever
7	• 242868	538242868	1	trigger spring
8	• 242869	538242869	1	front handle lock spring
C 9	• 242870	538242870	1	front handle button
C 10	• 242872	538242872	1	wires ass'y
C 11	•• 242910	538242910	1	wire
C 12	•• 242439	538242910	1	switch
13	• 242648	538242648	1	cap
14	• 235248	538235248	1	washer
15	• 240862	538240862	7	screw
16	• 242873	538242873	1	harness ring
17	229632	538229632	2	screw
C 18	242871	538242871	1	barrier
19	242931	538242931	1	barrier ring
20	243290	538243290	1	shaft retainer ring
21	• 243156	538243156	1	upper shaft assy
22	228192	538228192	3	bushing assy
23	243178	538243178	1	shaft
24	11248	538011248	1	bushing
25	11249	538011249	1	shaft joint
26	229077	538229077	1	screw M5x18
27	236381	538236381	1	screw M5x10
28	243180	538243180	1	joint
29	235912	538235912	1	nut M6
30	502203802	502203802	1	knob
31	242146	538242146	1	screw M6x40
32	249721	538249721	1	lower shaft assy
33	• 243395	538243395	1	button
34	• 243396	538243396	1	rivet
35	• 243206	538243206	1	shaft sheat
36	• 242831	538242831	2	shaft sheat retainer ring
37	243211	538243211	1	transmission shaft+retainer
38	228926	538228926	1	self locking nut M6
39	242728	538242728	1	gear box
40	• 240151	538240151	1	screw M8x10
41	235802	538235802	1	screw 5x14
42	235803	538235803	1	screw 5x25
43	236529	538236529	2	split washer
44	242729	538242729	1	flange adapter
45	240688	538240688	3	screw M5 and washer
B 49	249155	538249155	1	guard ass'y
B 50	• 242644	538242644	1	guard extension
51	• 240862	538240862	1	screw M5x14
53	• 242752	538242752	1	lower clamp
54	• 242629	538242629	1	upper clamp
55	• 227563	538227563	4	screw M5x16
56	• 241973	538241973	1	line cutter
57	• 229208	538229208	2	nut

Item	P/N McC	P/N ELX	Qty	DESCRIPTION
FIGURE 2				
A 1	531025001	531025001	1	P 25 trimmer head
2	• 537419302	537421501	1	body
3	• 537338901	537427901	1	adapter T25
C 4	• 537338901	537338901	1	spring T25
C 5	• 537419601	537419601	1	knob
C 6	• 537419501	537419501	1	spool (without line)
C 7	• 537419701	537419701	2	bushing
8	• 537419401	537419401	1	cover
9	242823	538242823	1	spacer
10	242815	538242815	1	flange

Item	P/N McC	P/N ELX	Qty	DESCRIPTION
FIGURE 3				
A 1	242815	538242815	1	flange
A 2	241155	538241155	1	grass shield
A 3	241006	538241006	1	flange
A 4	236596	538236596	1	cup
A 5	240481	538240481	1	nut

A=ALTA ROTAZIONE
 B=MEDIA ROTAZIONE
 C=ALTA ROTAZIONE
 NUOVI CODICI

A=HIGH MOVING
 B=MEDIUM MOVING
 C=SLOW MOVING
 NEW P. NUMBERS

A=HAUTE DEMANDE
 B=MOYENNE DEMANDE
 C=BASSE DEMANDE
 NOUVELLES REFERENCES

A=GROBE NACHFRAGE
 B=MITTELMAESSIGE
 C=WENIGE NACHFRAGE
 NEU CODEX

FIGURE 4

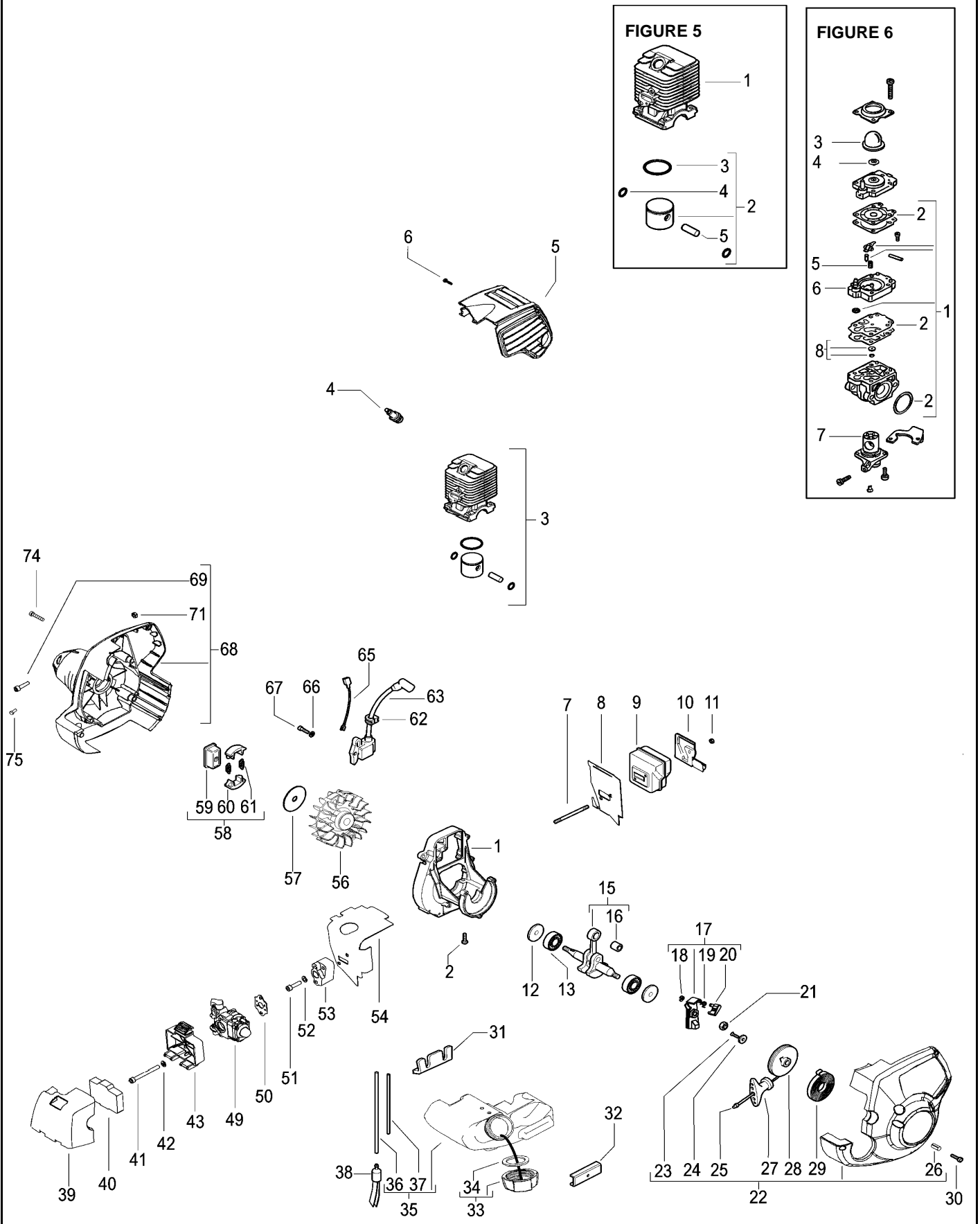


FIGURE 5

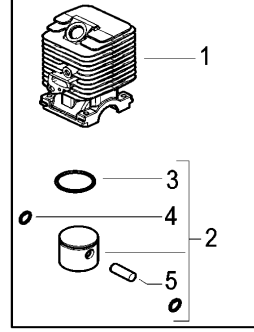
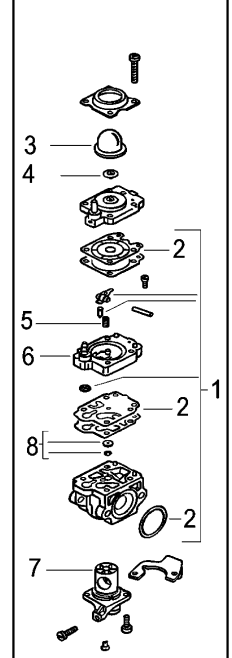


FIGURE 6



Item	P/N McC	P/N ELX	Qty	DESCRIPTION
FIGURE 4				
1	242802	538242802	1	crankcase
2	227565	538227565	4	screw M5x25
3	FIGURE 5			
A 4	92879	538092879	1	spark plug RDJ8J
5	242845	538242845	1	engine cover
6	240862	538240862	3	screw M4x18
7	242037	538242037	2	stud bolt
B 8	242859	538242859	1	exhaust gasket
C 9	242131	538242131	1	muffler
10	242962	538242962	1	muffler shield
11	235642	538235642	2	nut M5
C 12	242994	538242994	2	seal
C 13	241594	538241594	2	ball bearing
15	243486	538243486	1	crankshaft assy
C 16 •	235742	538235742	1	needle bearing
17	241784	538241784	1	starter pawl assy
18 •	111088	538111088	1	snap ring
19 •	241782	538241782	1	spring
20 •	241781	538241781	1	pawl
21	235248	538235248	1	nut
C 22	242886	538242886	1	starter assy
23 •	241077	538241077	1	screw M4x14
24 •	241703	538241703	1	washer
A 25 •	241746	538241746	1	rope
26 •	228260	538228260	3	bushing
27 •	242852	538242852	1	handle
B 28 •	241620	538241620	1	pulley
B 29 •	241619	538241619	1	spring
30	241963	538241963	3	screw M4x22
31	242038	538242038	1	tank grommet (crankcase side)
32	242039	538242039	1	tank grommet (starter side)
B 33	242484	538242484	1	fuel tank cap assy
A 34 •	236564	538236564	1	gasket
C 35	242889	538242889	1	fuel tank assy
B 36 •	229789	538229789	1	hose
B 37 •	242527	538242527	1	primer bulb hose
A 38	240452	538240452	1	fuel pickup
39	242848	538242848	1	air filter cover
B 40	242888	538242888	1	air filter
41	235808	538235808	2	screw 5x50
42	235248	538235248	1	washer
43	242847	538242847	1	air box
C 49	FIGURE 6			
A 50	242851	538242851	1	carb. Gasket
51	242173	538242173	2	screw M5x30
52	235248	538235248	2	washer
B 53	242849	538242849	1	carb. Spacer
B 54	242860	538242860	1	intake gasket

Item	P/N McC	P/N ELX	Qty	DESCRIPTION
56	243311	538243311	1	flywheel
57	241604	538241604	1	dust shield
B 58	241793	538241793	1	clutch assy
59 •	241789	538241789	1	clutch hub
60 •	241743	538241743	2	clutch shoe
A 61 •	241794	538241794	2	clutch spring
62	242895	538242895	1	grommet
C 63	243524	538243524	1	ignition coil
65	242891	538242891	1	ground wire
66	235248	538235248	2	washer
67	235806	538235806	2	screw M5x20
C 68	242887	538242887	1	joint assy
69 •	235806	538235806	1	screw M5x20
71 •	235216	538235216	1	nut M5
74	241963	538241963	4	screw M4x22
75	229632	538229632	1	screw 3,5x13

FIGURE 5				
C 1	243076	538243076	1	cylinder 30 cc
C 2	249179	538249179	1	piston kit 30 cc
B 3 •	242602	538242602	1	piston ring
4 •	235008	538235008	2	snap ring
5 •	241735	538241735	1	piston pin

FIGURE 6				
B	242885	538242885	1	carburetor WYJ538
A 1 •	247955	538247955	1	repair kit K20 WYJ
C 2 ••	247956	538247956	1	repair kit K10 WYJ
C 3 •	225834	538225834	1	primer
C 4 •	247957	538247957	1	valve
C 5 •	247958	538247958	1	spring
C 6 •	249419	538249419	1	pumping body
C 7 •	249418	538249418	1	valve
C 8 •	249417	538249417	1	jet

A=ALTA ROTAZIONE
 B=MEDIA ROTAZIONE
 C=ALTA ROTAZIONE
 NUOVI CODICI

A=HIGH MOVING
 B=MEDIUM MOVING
 C=SLOW MOVING
 NEW P. NUMBERS

A=HAUTE DEMANDE
 B=MOYENNE DEMANDE
 C=BASSE DEMANDE
 NOUVELLES REFERENCES

A=GROBE NACHFRAGE
 B=MITTELMAESSIGE
 C=WENIGE NACHFRAGE
 NEU CODEX